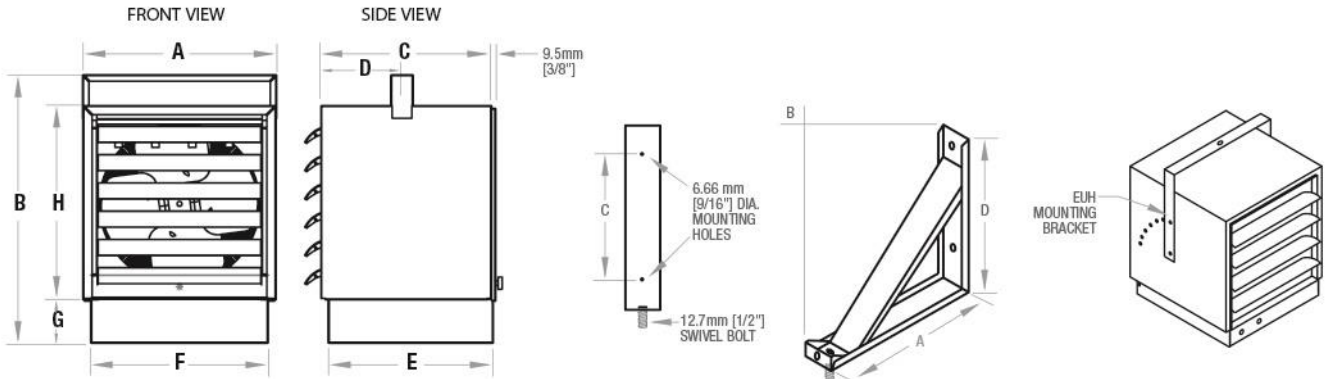


Industrial Unit Heater**EUH Series****Features**

- | | |
|------------------------|----------------------------------------------------------------------------------------------------------------------------------------------------------------|
| Color | - Almond |
| Finish | - Hybrid polyester epoxy powder coat paint finish |
| Voltage | - 120,208,240,277,347,480,600;1 and 3 phase |
| Construction | - 18 gauge die formed steel
- Individual adjustable, single piece 20 gauge convex profile air directing louvers |
| Heating Element | - Metal tubular sheath fused with spiral steel fins
- High quality nickel chromium wire encased in solidly packed magnesium oxide insulation |
| Heat Output | - Fan size and pitch is matched to the power and speed of the unit to optimize CFM, airflow, temperature rise, and quietness |
| Control | - Jumper provided to disable built-in thermostats when remote thermostats are required
- Field installed summer fan control and low voltage control options |
| Installation | - Ceiling hanger bracket included, optional wall bracket available (allows swivel movement) |
| Warranty | - One-year warranty on complete unit |
| Applications | - Shipping/receiving areas, warehouse storage areas, garages |

Industrial Unit Heater

EUH Series



Model	A	B	C	D	E	F	G	H
EUH	330mm 13"	495mm 19-1/2"	330mm 13"	165mm 6-1/2"	318mm 12-1/2"	299mm 11-3/4"	64mm 2-1/2"	330mm 13"

Hanger Bracket				
Model	A	B	C	D
EUH	318mm 12-1/2"	356mm 14"	203mm 8"	279mm 11"

Industrial Unit Heater

EUH Series

EUH

Cat. No.	kW	BTU	Volts	Phase	CFM	Weight (kg/lbs.)	Qty
EUH02B21T	2	6824	208	1	350	16 / 36	
EUH02B24CT	2	6824	208	1/3	350	16 / 36	
EUH02B31T	2	6824	240	1	350	16 / 36	
EUH02B51CT	2	6824	347	1	350	16 / 36	
EUH02B71CT	2	6824	480	1	350	16 / 36	
EUH02B74CT	2	6824	480	1/3	350	18 / 40	
EUH02B81CT	2	6824	600	1	350	18 / 40	
EUH02B84CT	2	6824	600	1/3	350	18 / 40	
EUH03B11T	3	10236	120	1	350	16 / 36	
EUH03B24CT	3	10236	208	1/3	350	16 / 36	
EUH03B31T	3 / 2.3	10236	240/208	1	350	16 / 36	
EUH03B34CT	3 / 2.3	10236	240/208	1/3	350	16 / 36	
EUH03B41T	3	10236	277	1	350	18 / 40	
EUH03B51CT	3	10236	347	1	350	18 / 40	
EUH03B73CT	3	10236	480	3	350	18 / 40	
EUH03B81CT	3	10236	600	1	350	18 / 40	
EUH03B83CT	3	10236	600	3	350	18 / 40	
EUH04B24CT	4	13648	208	1/3	350	16 / 36	
EUH04B31T	4	13648	240	1	350	16 / 36	
EUH04B51CT	4	13648	347	1	350	16 / 36	
EUH04B71CT	4	13648	480	1	350	18 / 40	
EUH04B74CT	4	13648	480	1/3	350	18 / 40	
EUH04B81CT	4	13648	600	1	350	18 / 40	
EUH04B83CT	4	13648	600	3	350	18 / 40	
EUH05B24CT	5	17060	208	1/3	350	16 / 36	
EUH05B31T	5/3.8	17060/12795	240/208	1	350	16 / 36	
EUH05B34CT	5/3.8	17060/12795	240/208	1/3	350	16 / 36	
EUH05B41T	5	17060	277	1	350	18 / 40	
EUH05B51CT	5	17060	347	1	350	18 / 40	
EUH05B74CT	5	17060	480	1/3	350	18 / 40	
EUH05B84CT	5	17060	600	1/3	350	18 / 40	
EUH08B24CT	7.5	25590	208	1/3	600	21 / 46	
EUH08B34CT	7.5/5.6	25590/19193	240/208	1/3	600	21 / 46	
EUH08B74CT	7.5	25590	480	1/3	600	22 / 50	
EUH08B84CT	7.5	25590	600	1/3	600	22 / 50	
EUH10B24CT	10	34120	208	1/3	600	21 / 46	
EUH10B34CT	10/7.5	34120/25590	240/208	1/3	600	21 / 46	
EUH10B74CT	10	34120	480	1/3	600	22 / 50	
EUH10B84CT	10	34120	600	1/3	600	22 / 50	
EUH12B74CT	12	40944	480	1/3	600	22 / 50	
EUH12B84CT	12	40944	600	1/3	600	22 / 50	

Industrial Unit Heater

EUH Series

Control Options (field installed)

Cat. No.	Description	Qty
EUAF2	Summer Fan Switch	

Accessories (field installed)

Cat. No.	Description	Qty
EUHWB	Wall hanger bracket for EUH series (3-12kW)	

Specifications may change without prior notice

Project:	Approval Information
Consultant Engineer:	
Electrician Contractor:	
Distributor:	
Date :	
Contact at Dimplex:	
Comments:	